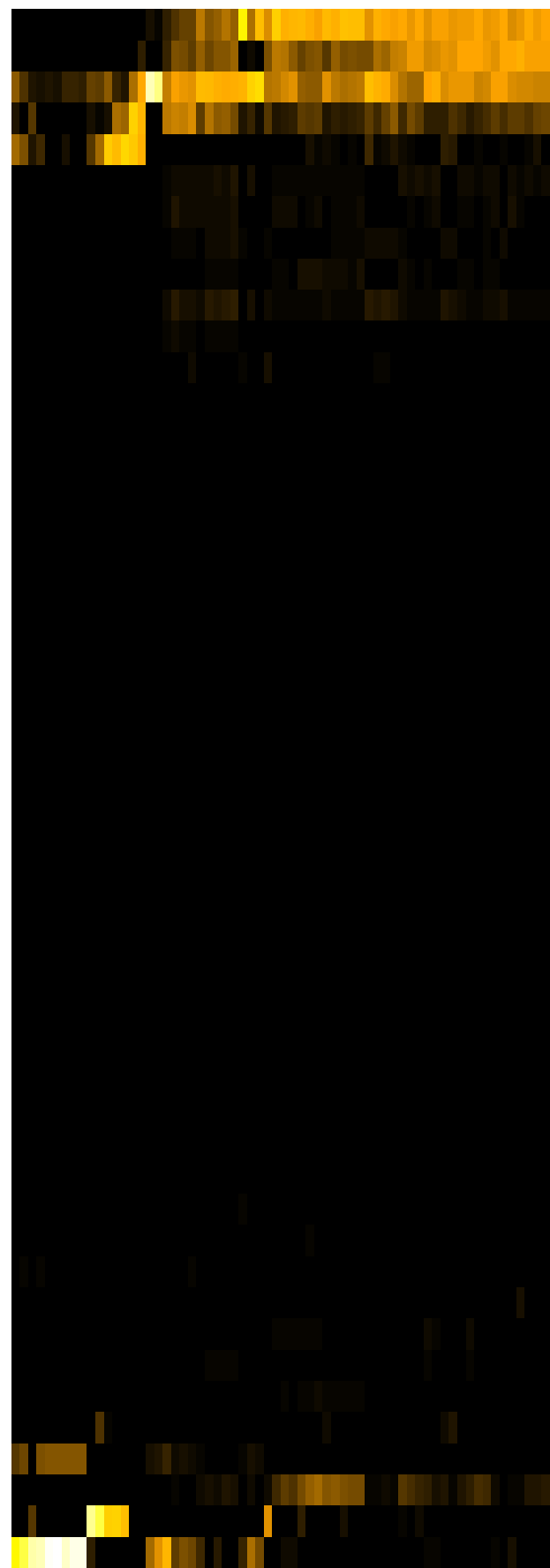
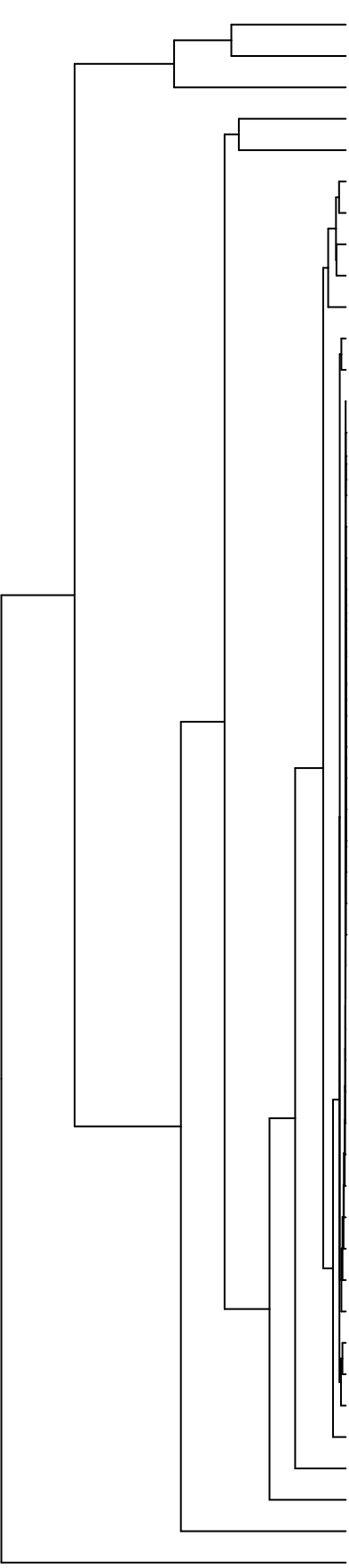


Group006  
 B Final -PMA  
 A Final -PMA



- Veillonella
- Haemophilus
- Streptococcus
- Neisseria
- Klebsiella
- Eikenella
- Aggregatibacter
- Schaalia
- Campylobacter
- Granulicatella
- Gemella
- Rothia
- Saccharibacteria\_(TM7)\_[G-6]
- Cutibacterium
- Acinetobacter
- Pseudomonas
- Phyllobacterium
- Agrobacterium
- Delftia
- Acidovorax
- Lachnospiraceae\_[G-2]
- Novosphingobium
- Leifsonia
- Sphingobium
- Riemerella
- Microbacterium
- Siccationidurans
- Saccharibacteria\_(TM7)\_[G-5]
- Capnocytophaga
- Abconditabacteria\_(SR1)\_[G-1]
- Lautropia
- Lancefieldella
- Oribacterium
- Saccharibacteria\_(TM7)\_[G-1]
- Lachnoanaerobaculum
- Alloprevotella
- Solobacterium
- Stomatobaculum
- Actinomyces
- Catonella
- Staphylococcus
- Serratia
- Prevotella
- Porphyromonas
- Leptotrichia
- Raoultella
- Salmonella
- Fusobacterium
- Enterobacter
- Citrobacter

- F28914.S408
- F28914.S566
- F28914.S402
- F28914.S406
- F28914.S403
- F28914.S561
- F28914.S564
- F28914.S568
- F28914.S396
- F28914.S081
- F28914.S085
- F28914.S075
- F28914.S088
- F28914.S084
- F28914.S397
- F28914.S243
- F28914.S400
- F28914.S553
- F28914.S555
- F28914.S559
- F28914.S560
- F28914.S247
- F28914.S246
- F28914.S234
- F28914.S233
- F28914.S076
- F28914.S242
- F28914.S078
- F28914.S236
- F28914.S245
- F28914.S073
- F28914.S238

Samples

Genus